



# **Guide to Jewish Facilities in Scotland**

# Contents

	<i>Page</i>
<b>Scottish Council of Jewish Communities</b>	2
<b>Glasgow</b>	
Glasgow Jewish Representative Council	2
Garnethill Synagogue	3
Giffnock and Newlands Hebrew Congregation	3
Newton Mearns Hebrew Congregation	3
Clarkston Synagogue	
Langside Synagogue	4
Glasgow Reform Synagogue	4
Masorti	5
<b>Edinburgh</b>	
Edinburgh Hebrew Congregation	5
Sukkat Shalom: Edinburgh Liberal Jewish Community	5
<b>Aberdeen</b>	6
<b>Dundee</b>	6
<b>Argyll and the Highlands</b>	6
<b>Students</b>	7
<b>Kosher Food</b>	7
<b>Mikveh</b>	10
<b>Circumcision</b>	10
<b>Bookshops</b>	10
<b>Education</b>	11
<b>Welfare</b>	12
<b>History and Genealogy</b>	14



# Jewish Communities

## SCOTTISH COUNCIL OF JEWISH COMMUNITIES

[www.scojec.org](http://www.scojec.org)  
[scojec@scojec.org](mailto:scojec@scojec.org)  
222 Fenwick Rd, Giffnock, Glasgow, G46 6UE  
+44 (0)141 638 6411



The Scottish Council of Jewish Communities is the representative body of all the Jewish communities in Scotland. The Council advances public understanding about the Jewish religion, culture and community, and develops and provides information and assistance to educational, health and welfare organisations. It also works in partnership with other organisations and stakeholders to promote good relations and understanding among community groups and to promote equality. In furtherance of that end, it represents the Jewish community in Scotland to government and other statutory and official bodies, monitors the Scottish Parliament and liaises with Ministers, MSPs, Churches, Trades Unions, and others on matters affecting the Jewish community.

[Contents](#)

## GLASGOW

Glasgow is home to the largest Jewish Community in Scotland. Most of the community lives in East Renfrewshire on the south side of the city, which is also where most of the religious, welfare and social organisations are based. There are six synagogues in Glasgow, five Orthodox and one Reform.

### **Glasgow Jewish Representative Council**

[222 Fenwick Rd, Giffnock, Glasgow, G46 6UE](http://222FenwickRd.com)  
+44 (0)141-577 8200  
[office@glasgowjewishrepcouncil.org](mailto:office@glasgowjewishrepcouncil.org)  
<http://glasgowjewishrepcouncil.org>



The Council was founded in 1914 to speak on behalf of the Jewish community of Glasgow and West of Scotland. It fosters good relations between the community and other local religious and civic bodies, and provides a democratic forum for synagogues and welfare, educational, social and cultural organisations, and liaises with them to ensure that the community operates effectively.

## Garnethill Synagogue (Orthodox)

129 Hill Street, Glasgow, G3 6UB

+44 (0)141 332 4151

[www.sjac.org.uk/archives/garnethill.html](http://www.sjac.org.uk/archives/garnethill.html)

Rev Aharon Soudry +44 (0)141 639 7730

Garnethill Synagogue, in the city centre, is the oldest synagogue in Scotland, and was founded in 1879, at which time the community numbered around 700. The synagogue was completely refurbished in 1998 and celebrated its 125<sup>th</sup> anniversary in 2004 with a service attended by Chief Rabbi Jonathan Sacks. Shabbat and festival morning services begin at 10.00am; there are no weekday services.

Tours can be arranged through the synagogue office.

The Synagogue is home to the [Scottish Jewish Archive Centre](#).



## Giffnock and Newlands Hebrew Congregation (Orthodox)

222 Fenwick Rd, Giffnock, Glasgow, G46 6UE

+44 (0)141 577 8250

[admin@giffnockshul.co.uk](mailto:admin@giffnockshul.co.uk)

[www.giffnockshul.co.uk](http://www.giffnockshul.co.uk)

Rabbi Moshe Rubin [rabbimrubin@talk21.com](mailto:rabbimrubin@talk21.com) / +44 (0)141 577 8251



Giffnock and Newlands Synagogue is the largest synagogue in Scotland, and is the only one to hold daily morning, afternoon and evening services. The synagogue complex includes the Jewish Community Centre, mikveh, cheder, kollel (college for advanced rabbinic studies), and Lubavitch centre and restaurant. The premises are used by a wide range of organisations, including the mother and toddlers group, senior citizens friendship club and several youth groups. Shabbat and festival morning services begin at 9.30am; for times of other services please see the website.

### John K Clark's Painted Glass Windows

John Clark's painted glass windows, each of which depicts a Jewish festival or event, were originally commissioned for Queens Park Synagogue (now closed) as part of the Jewish community's contribution to Glasgow European City of Culture 1990. They were subsequently moved to Giffnock and Newlands Synagogue.

*above:* "The Giving of the Torah on Mount Sinai" and *right:* "Pesach Seder". More information about the windows is available on John Clark's website at [www.glasspainter.com/synagogue/index.html](http://www.glasspainter.com/synagogue/index.html)

Tours can be arranged through the Glasgow Jewish Representative Council [office@glasgowjewishrepcouncil.org](mailto:office@glasgowjewishrepcouncil.org) / 0141 577 8200.



## **Newton Mearns Hebrew Congregation (Orthodox)**

14 Larchfield Ct, Newton Mearns, Glasgow, G77 5PL

+44 (0)141 639 4000

[office@nmhc.org.uk](mailto:office@nmhc.org.uk)

[www.nmhc.org.uk](http://www.nmhc.org.uk)

Rabbi Danny Bergson +44 (0)7917 548 386



Newton Mearns Synagogue is the most recently established Orthodox community in Scotland, and organises a wide range social and educational activities. Shabbat and festival morning services begin at 9.30am. For times of other services please contact the synagogue office.

## **Clarkston Synagogue (Orthodox)**

Clarkston Road, Glasgow, G44 3YP

+44 (0)141 616 2126

+44 (0)7881 437 877

Please telephone for times of services.



## **Langside Synagogue (Orthodox)**

12 Niddrie Rd, Glasgow, G42 8QA

+44 (0)141 649 2962



Langside Synagogue was built over 80 years ago and features a traditional wooden ark and other fittings hard-carved by one of its founder members. The designs are associated with Lithuanian synagogues of the period and are unique in Scotland. Shabbat and festival morning services begin at 9.30am. For times of other services please contact the synagogue office

## **Glasgow Reform Synagogue**

147 Ayr Rd, Newton Mearns, Glasgow, G77 6RE

+44 (0)141 639 4083

[shul@grs.org.uk](mailto:shul@grs.org.uk)

[www.grs.org.uk](http://www.grs.org.uk)

Rabbi Nancy Morris

Glasgow Reform Synagogue was established more than 80 years ago and the building was completely refurbished in 2002. Services are held on Friday evening at 6:30pm, Shabbat morning at 11am and Sunday morning at 9.15am.



## **Masorti**

+44 (0)7815 731 484

[warren@masortiscotland.org](mailto:warren@masortiscotland.org)

<http://masortiscotland.org>

Masorti Scotland does not have its own premises but holds services on the second Shabbat morning of each month.

***For information about kosher food in Glasgow see [p7](#)***

***For Glasgow mikveh see [p10](#)***

[Contents](#)

## **EDINBURGH**

Edinburgh is home to the second largest Jewish community in Scotland, a lively community with a wide range of social and cultural societies and clubs that include the Literary Society, Junior and Senior Maccabi Youth Clubs, Maccabi Cricket Club, Association of Jewish Refuges, WIZO, and community welfare.

### **Edinburgh Hebrew Congregation (Orthodox)**

[4 Salisbury Rd, Edinburgh, EH16 5AB](#)

+44 (0)131 667 3144 / +44 (0)7734 291 836

[secretary@ehcong.com](mailto:secretary@ehcong.com)

[www.ehcong.com](http://www.ehcong.com)

Rabbi David Rose:

+44 (0)131 668 1279 / [david.rose39@btinternet.com](mailto:david.rose39@btinternet.com)



The synagogue premises are also home to the community centre, the city's mikveh, a resource centre and the Cosgrove Library. There are regular Friday night services, and the Shabbat and festival morning services begin (at "Nishmat") at 10.00am There are also occasional weekday services – contact Rabbi Rose for details and to arrange Shabbat hospitality.

### **Sukkat Shalom: Edinburgh Liberal Jewish Community**

+44 (0)131 777 8024

[info@elj.org](mailto:info@elj.org)

[www.elj.org](http://www.elj.org)

Rabbi Mark Solomon

Sukkat Shalom does not have its own premises, but holds services on the first Friday of each month at 7pm and at 11am on a Shabbat morning in the middle of the month. These are regularly followed by a communal meal. Sukkat Shalom runs a cheder and a welfare group and holds regular social events.

***For information about kosher food in Edinburgh see [p7](#)***

***For Edinburgh mikveh see [p10](#)***

[Contents](#)

## **ABERDEEN**

### **Aberdeen Hebrew Congregation**

74 Dee Street, Aberdeen, AB11 6DS

+44 (0)7810 024 456

[info@aberdeenhebrew.org.uk](mailto:info@aberdeenhebrew.org.uk)

[www.aberdeenhebrew.org.uk](http://www.aberdeenhebrew.org.uk)



Aberdeen has a small Orthodox Synagogue that in spite of having no permanent rabbi successfully conducts a variety of religious, educational, and social events. Friday night services are held every week at 6pm and a Shabbat morning service is held at 10am on the first Saturday morning of every month. Visitors are always welcome and advance notice of arrival is much appreciated as services can struggle to achieve a minyan.

## **DUNDEE**

### **Dundee Hebrew Congregation**

9 St Mary Place, Dundee, DD1 5RB

+44 (0)141 638 6411

[dundeeshul@scojec.org](mailto:dundeeshul@scojec.org)

[www.scojec.org/communities/dundee/index.html](http://www.scojec.org/communities/dundee/index.html)



Dundee is home to a small community that holds services on the last Friday evening of every month as well as occasional social events. The community is delighted to welcome visitors, but please contact the synagogue in advance.

## **Jewish Network of Argyll and the Highlands**

There is no synagogue or formal Jewish community in other cities or in rural areas of Scotland, but people living in these areas have formed an informal network that meets for occasional social events.

Regional Liaison: Frank +44 (0)1445 712151

[house.frank@gmail.com](mailto:house.frank@gmail.com)

***For information about kosher food in Aberdeen, Dundee, and the Highlands see [p7](#)***

[Contents](#)

## Students

There are significant numbers of Jewish students studying in Scottish universities and colleges, many of whom participate in religious, cultural and social events organised by the Jewish student chaplain and the various student Jewish Societies.

### Northern Region Chaplains: Garry and Suzanne Wayland

222 Fenwick Road, Glasgow, G46 6UE

<http://northernregion.webs.com>

+44 (0)141 638 9403 / +44 (0)7791 292 790

[garry@ujc.org.uk](mailto:garry@ujc.org.uk)

### Union of Jewish Students

[www.ujs.org.uk/](http://www.ujs.org.uk/)

### Edinburgh University J-Soc

[jsoc.eusa.ed.ac.uk/](http://jsoc.eusa.ed.ac.uk/)

[edinburghjsoc@yahoo.co.uk](mailto:edinburghjsoc@yahoo.co.uk)

### St Andrew's University J-soc

<http://www.facebook.com/group.php?gid=2241105894&v=info&ref=ts>

[jewishsociety@st-andrews.ac.uk](mailto:jewishsociety@st-andrews.ac.uk)

[Contents](#)

## Kosher Food

The only kosher grocery shops and restaurants in Scotland are in Glasgow and Edinburgh, but a number of supermarkets have small kosher departments. In addition, some food on the general shelves of supermarkets and mini-markets throughout the country has a *hechsher* [label of rabbinic approval]. The most commonly found are:



Kosher bread and rolls approved by the Sephardi Kashrut Authority, and bearing their logo, can be found in most supermarkets throughout the country. Approved brands supervised include Kingsmill, Mr. Bagels, Allinson, Burgen, Sunblest (bread & crumpets only), Day O Fresh and Mighty White.

Additional information can be found on the websites of the London Beth Din [www.kosher.org.uk](http://www.kosher.org.uk) and Sephardi Kashrut Authority [www.sephardikashrut.org](http://www.sephardikashrut.org)

# Kosher food in Glasgow

## Restaurant

- **L'Chaim's**  
Advance booking is essential as the restaurant is not open every day.  
[222 Fenwick Road, Glasgow, G46 6UE](#)  
+44 (0)141 638 6116

## Caterer

- *(until 31 December 2011)* **Simcha Catering**  
+44 (0)141 620 0070
- *(from 1 January 2012)* **En Croute Kosher Catering**  
+44 (0)141 440 0114 / [catering@encroute.co.uk](mailto:catering@encroute.co.uk)

## Grocery Shops

- **Mark's Deli**  
[6 Burnfield Road, Glasgow, G46 7QB](#)  
+44 (0)141 638 8947  
[info@marksdeli.co.uk](mailto:info@marksdeli.co.uk)
- **Hello Deli**  
[200 Fenwick Rd, Giffnock, Glasgow, G46 6UE](#)  
+44 (0)141 638 8267

## Supermarkets with a kosher department

- **Tesco**  
[Silverburn Shopping Centre, Barrhead Road, Glasgow, G53 6QR](#)  
+44 (0)141 435 1400
- **Sainsbury's**  
[10 Darnley Mains Road, Glasgow, G53 7RH](#)  
+44 (0)141 638 6495
- **Asda**  
[1 The Avenue, Glasgow, G77 6EY](#)  
+44 (0)141 639 1333
- **Morrison's**  
[136-144 Fenwick Road, Glasgow, G46 6XN](#)  
+44 (0)141 638 0152
- **Waitrose**  
[2 Greenlaw Place, Glasgow, G77 6GW](#)  
+44 (0)141 616 3144

## Kosher food in Edinburgh

### Restaurant

- **Kalpna**  
[2/3 St Patricks Square, Edinburgh, EH8 9EZ](#)  
+44 (0)131 667 9890

This restaurant has been checked by Rabbi Rose (Edinburgh Hebrew Congregations) and found to be a totally vegetarian establishment, using only raw ingredients, with all food items being made on the premises. Rabbi Rose deems it permissible to eat there.

### Bakery

- **Falko Konditormeister**  
[7 Bruntsfield Place, Edinburgh, EH10 4HN](#)  
+44 (0)131 656 0763

The following items **only** have been approved by Rabbi Rose (Edinburgh Hebrew Congregation):

- Challah (*parev, pat yisrael, challah taken. Must be ordered by Thursday lunchtime, available Friday morning.*)
- Reggenmischbrot, Bauernbrot, Jagerkruste, Kemmissbrot (*parev, pat akum*)
- All cakes **made by Falko** (*milky*)
- Falko's ice-cream sold in the shop in Gullane is permitted and *milky*.

Note: The shop also sells pastries baked elsewhere. These are not kosher.

### Supermarkets with a kosher department

- **Sainsbury's**  
[Cameron Toll Shopping Centre, 6 Lady Road, Edinburgh, EH16 4TH](#)  
+44 (0)131 666 5200

- **Waitrose**  
Kosher challah and rye bread can be bought at the following branches:  
[38 Comely Bank Road, Edinburgh, EH4 1AW](#)  
+44 (0)131 332 6312 and  
[145 Morningside Road, Edinburgh, EH10 4AX](#)  
+44(0)131 447 6899

## Kosher food in Aberdeen

### Supermarket with a kosher department

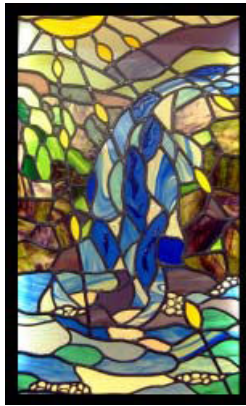
- **Sainsbury's**  
[45-47 Garthdee Road, Aberdeen, AB10 7AY](#)  
+44 (0)1224 209821

## Kosher food by mail order

**Titanics**, based in Manchester, delivers kosher food to most areas of mainland UK.  
+44 (0)161 792 1888

[info@titanics.co.uk](mailto:info@titanics.co.uk)  
[www.titanics.co.uk](http://www.titanics.co.uk)

[Contents](#)



*Stained glass window  
at Edinburgh mikveh*

## Mikveh

### **Glasgow mikveh**

contact Margalit Borowski +44 (0)7831 104 110

### **Edinburgh mikveh**

contact Gitty +44 (0)131 258 3869  
Val +44 (0)131 667 1521  
[mikveh@echong.org](mailto:mikveh@echong.org)

[Contents](#)

## Circumcision

### **Scotland**

Rabbi M Bamberger (Orthodox) +44 (0)7968 187 119

### **National Representative Organisations**

The Initiation Society (Orthodox) [www.initiationsociety.org.uk/](http://www.initiationsociety.org.uk/)  
+44 (0)20 8455 5059 / 07712 821 219  
[contact@initiationsociety.org.uk](mailto:contact@initiationsociety.org.uk)

Association of Reform and Liberal Mohalim

+44 (0)20 8349 2568  
[sylvia.morris@reformjudaism.org.uk](mailto:sylvia.morris@reformjudaism.org.uk)

[Contents](#)

## Bookshops

- **J & E Levingstone**

In addition to books, J & E Levingstone sells a small range of religious items such as chanukiot and mezzuzot.

[47-55 Sinclair Drive, Glasgow, G42 9PT](#)

+44 (0)141 649 2962

- **Lubavitch**

This small bookshop is situated within L'Chaim's Restaurant (see above), and is open by appointment only.





[222 Fenwick Rd, Giffnock, Glasgow, G46 6UE](#)

+44 (0)141 638 6116

[Contents](#)

# Education

## Glasgow

-  **Calderwood Lodge Jewish Primary School and Nursery**  
Scotland's only Jewish school, run by East Renfrewshire Council. The curriculum includes Hebrew and Jewish studies, and the school works to foster a sense of pride and identity in pupils' heritage within a strong Jewish ethos.  
[28 Calderwood Road, Glasgow, G43 2RU](http://28.Calderwood.Road.Glasgow.G43.2RU)  
[www.ea.e-renfrew.sch.uk/calderwoodlodge/](http://www.ea.e-renfrew.sch.uk/calderwoodlodge/)  
0141 570 7060
-  **UJIA**  
Provides resources and funding for the wide range of youth groups in Scotland, including B'nei Akiva, Habonim Dror, JLGB, FZY and RSY.  
[Jewish Community Centre, 222 Fenwick Road, Glasgow, G46 6UE](http://Jewish.Community.Centre.222.Fenwick.Road.Glasgow.G46.6UE)  
+44 (0)141 530 5343 / [Joanna.Hyman@ujia.org](mailto:Joanna.Hyman@ujia.org)
- **Lubavitch**  
Lubavitch organises a wide range of activities including cheder classes, an explanatory Shabbat service: "Shul in the Park", and L'Chaim's Restaurant.  
[The Glen, 222 Fenwick Road, Glasgow, G46 6UE](http://The.Glen.222.Fenwick.Road.Glasgow.G46.6UE)  
[www.lubofscot.co.uk/](http://www.lubofscot.co.uk/)  
+44 (0)141 638 6116
-  **Maccabi**  
Organises sports training and other activities for children and adults.  
[May Terrace, Glasgow, G46 6LD](http://May.Terrace.Glasgow.G46.6LD)  
+44 (0)141 621 1616 / [info@maccabigbscotland.org](mailto:info@maccabigbscotland.org)
-  **Limmud**  
Occasional lectures, workshops and discussions on topics of Jewish interest.  
[Jewish Community Centre, 222 Fenwick Road, Glasgow, G46 6UE](http://Jewish.Community.Centre.222.Fenwick.Road.Glasgow.G46.6UE)  
[May Terrace, Glasgow, G46 6LD](http://May.Terrace.Glasgow.G46.6LD)  
+44 (0)141 621 1616 / [info@maccabigbscotland.org](mailto:info@maccabigbscotland.org)

## Edinburgh

- **Edinburgh Literary Society**  
The "Lit", founded in 1888, holds regular lectures on a wide range of historical and cultural topics.  
[www.ejls.org/](http://www.ejls.org/)  
[ejls@xemaps.com](mailto:ejls@xemaps.com)

- **Cheder Classes**

- Orthodox**

- 4 Salisbury Rd, Edinburgh, EH16 5AB

- +44 (0)131 668 1279

- Liberal**

- [info@eljc.org](mailto:info@eljc.org)

- +44 (0)131 777 8024

- This is a message service. If you leave a message saying what you are looking for the right person will get back in contact.

- **Adult Education Classes**

- 4 Salisbury Rd, Edinburgh, EH16 5AB

- +44 (0)131 668 1279

- **Maccabi**

- Youth group that meets weekly in members' houses for discussion, and programmes of Jewish interest.

- +44 (0)7938 582 830 / [bonaly2@tiscali.co.uk](mailto:bonaly2@tiscali.co.uk)

## **Aberdeen and Dundee**

- Rabbi Rose (Edinburgh Synagogue) visits occasionally for shiurim and discussion groups.

***Contents***

## **Welfare Organisations**

### **Jewish Care**

[The Walton Community Care Centre, May Terrace, Giffnock, G46 6LD](#)

+44 (0)141 620 1800

[www.jcarescot.org.uk](http://www.jcarescot.org.uk)

Jewish Care Scotland, provides an extensive range of care services for Jewish people in need throughout Scotland. Professional staff are supported by over 100 volunteers who assist in almost all services. Services include Social Work support, specialist help for people with mental health problems, Welfare Rights advice, Day Care, Meals on Wheels, Befriending and Clubs for older people and those with long term physical illnesses and disabilities.



## **Cosgrove Care**

The Walton Community Care Centre, May Terrace, Giffnock, G46 6LD

+44 (0)141 620 2500

[www.cosgrove.co.uk](http://www.cosgrove.co.uk)

Cosgrove Care supports people with learning disabilities and their families within the Jewish community. It offers a comprehensive range of support, including supported independent living for adults, holiday playschemes for children, and daily and weekly group activities. One of its two charity shops offers supported employment and volunteering opportunities to service users.



## **Newark Care**

32 Burnfield Road, Glasgow, G46 7PZ

+44 (0)141 621 2560

[info@newarkcare.org.uk](mailto:info@newarkcare.org.uk)

Provides residential and nursing care within a Jewish environment for people who are no longer able to continue living in their own home.

## **Burial**

Glasgow Hebrew Burial Society

+44 (0)141 577 8226 / [hebrewburialsociety@gmail.com](mailto:hebrewburialsociety@gmail.com)

Queen's Park Charitable Trust

+44 (0)141 577 8241 / [trust@qpct.co.uk](mailto:trust@qpct.co.uk)

Glasgow Reform Synagogue

+44 (0)141 639 4083 / [shul@grs.org.uk](mailto:shul@grs.org.uk)

Edinburgh Jewish Friendly Burial Society

+44 (0)773 429 1836 / [gershon.mendick@uk.pkf.com](mailto:gershon.mendick@uk.pkf.com)

Edinburgh Liberal Jewish Community

+44 (0)131 777 8024 / [burials@eljic.org](mailto:burials@eljic.org)

Aberdeen Hebrew Congregation

+44 (0)7810 024 456 / [e.reiter@abdn.ac.uk](mailto:e.reiter@abdn.ac.uk)

Dundee Hebrew Congregation

+44 (0)141 638 6411 / [sands.levy@btinternet.com](mailto:sands.levy@btinternet.com)

For a list of disused cemeteries please contact the Scottish Jewish Archives Centre (see below).

***Contents***

# History and Genealogy

## Scottish Jewish Archives Centre

129 Hill Street, Glasgow, G3 6UB

[www.sjac.org.uk/](http://www.sjac.org.uk/)

+44 (0)141 332 4911

Founded in 1987 and based in Garnethill Synagogue in Glasgow, the Scottish Jewish Archives Centre aims to document and illustrate the religious, organisational, social, economic, political, cultural and family life of Jews in Scotland since the eighteenth century. It provides a research facility and an educational resource for the Jewish, and also the wider community, in order to heighten awareness of the Jewish heritage in Scotland and to stimulate study of the history of the Jews in this country.

## The Necropolis

Castle Street, Glasgow, G4

[www.glasgow.gov.uk/en/Residents/Parks\\_Outdoors/HeritageTrails/GlasgowNecropolis/](http://www.glasgow.gov.uk/en/Residents/Parks_Outdoors/HeritageTrails/GlasgowNecropolis/)

The first burial in Glasgow Necropolis in 1832 was of a Jewish man, Joseph Levi. The Necropolis has been described as “a unique representation of Victorian Glasgow”. It is a memorial to the merchant patriarchs of the City and contains the remains of almost every eminent Glaswegian of its day, with monuments designed by leading Glaswegian architects including Alexander ‘Greek’ Thompson, Bryce, Hamilton and Mackintosh. The Jewish section is in the northernmost corner (to the far left on entering the main gates).

## Jewish Cemeteries in Scotland

For cemeteries in current use contact the local Burial Society (see above for details). Historical records of burials in Jewish cemeteries in Scotland are held by the Scottish Jewish Archive Centre and the relevant Jewish Burial Societies. For information about other Jewish cemeteries in Scotland see the International Jewish Cemetery Project website at

<http://www.iajgsjewishcemeteryproject.org/scotland/index.html>

## St Mungo Museum Of Religious Life And Art

2 Castle Street, Glasgow, G4 0RH

[www.glasgowmuseums.com/venue/index.cfm?venueid=13](http://www.glasgowmuseums.com/venue/index.cfm?venueid=13)

+44 (0)141 553 2557

St Mungo Museum explores the importance of religion in people's lives across the world and across time, with the aim of promoting understanding and respect between people of different faiths and none.

[Contents](#)