



Guide to Jewish Facilities in Scotland

Contents

	<i>Page</i>
Synagogues and Jewish Communities	
Scottish Council of Jewish Communities	3
Glasgow	
Garnethill Synagogue	3
Giffnock and Newlands Hebrew Congregation	4
Newton Mearns Hebrew Congregation	4
Netherlee, Clarkston and Queens Park Hebrew Congregation	5
Langside Synagogue	5
Glasgow Reform Synagogue	5
Edinburgh	
Edinburgh Hebrew Congregation	6
Sukkat Shalom: Edinburgh Liberal Jewish Community	6
Aberdeen	7
Dundee	7
Argyll and the Highlands	8
Students	8
Kosher Food	9
Bookshops	11
Mikveh	12
Education	12
Welfare	14
History and Genealogy	15



Jewish Communities

SCOTTISH COUNCIL OF JEWISH COMMUNITIES

www.scojec.org
scojec@scojec.org
+44 (0)141 638 6411

The Scottish Council of Jewish Communities is the representative body of all the Jewish communities in Scotland. The Council advances public understanding about the Jewish religion, culture and community, and develops and provides information and assistance to educational, health and welfare organisations. It also works in partnership with other organisations and stakeholders to promote good relations and understanding among community groups and to promote equality. In furtherance of that end, it represents the Jewish community in Scotland to government and other statutory and official bodies, monitors the Scottish Parliament and liaises with Ministers, MSPs, Churches, Trades Unions, and others on matters affecting the Jewish community.



Contents

GLASGOW

Glasgow is home to the largest Jewish Community in Scotland. Most of the community lives in East Renfrewshire on the south side of the city, which is also where most of the religious, welfare and social organisations are based. There are six synagogues in Glasgow, five Orthodox and one Reform.

Garnethill Synagogue (Orthodox)

[129 Hill Street, Glasgow, G3 6UB](http://129HillStreet.com)
+44 (0)141 332 4151
www.sjac.org.uk/archives/garnethill.html
Rev Aharon Soudry +44 (0)141 639 7730

Garnethill Synagogue, in the city centre, is the oldest synagogue in Scotland, and was founded in 1879, at which time the community numbered around 700. The synagogue was completely refurbished in 1998 and celebrated its 125th anniversary in 2004 with a service attended by Chief Rabbi Jonathan Sacks. Shabbat and festival morning services begin at 10.00am; there are no weekday services.

Tours can be arranged through the synagogue office.

The Synagogue is home to the [Scottish Jewish Archive Centre](#).



Giffnock and Newlands Hebrew Congregation (Orthodox)

222 Fenwick Rd, Giffnock, Glasgow, G46 6UE

+44 (0)141 577 8250

Rabbi Moshe Rubin rabbimrubin@talk21.com / +44 (0)141 577 8251



Giffnock and Newlands Synagogue is the largest synagogue in Scotland, and is the only one to hold daily morning, afternoon and evening services. The synagogue complex includes the Jewish Community Centre, mikveh, cheder, kollel (college for advanced rabbinic studies), and Lubavitch centre and restaurant. The premises are used by a wide range of organisations, including the mother and toddlers group, senior citizens friendship club and several youth groups. Shabbat and festival morning services begin at 9.30am; for times of other services please contact the synagogue office.

John K Clark's Painted Glass Windows

John Clark's painted glass windows, each of which depicts a Jewish festival or event, were originally commissioned for Queens Park Synagogue (now closed) as part of the Jewish community's contribution to Glasgow European City of Culture 1990. They were subsequently moved to Giffnock and Newlands Synagogue.

above: "The Giving of the Torah on Mount Sinai" and *right:* "Pesach Seder". More information about the windows is available on John Clark's website at

www.glasspainter.com/synagogue/index.html



Tours can be arranged through the Glasgow Jewish Representative Council office@glasgowjewishrepcouncil.org / 0141 577 8200.

Newton Mearns Hebrew Congregation (Orthodox)

14 Larchfield Ct, Newton Mearns, Glasgow, G77 5HB

+44 (0)141 639 4000

office@nmhc.org.uk

www.nmhc.org.uk

Rabbi Danny Bergson +44 (0)7917 548 386

Newton Mearns Synagogue is the most recently established Orthodox community in Scotland, and organises a wide range social and educational activities. Shabbat and festival morning services begin at 9.30am. For times of other services please contact the synagogue office.



Netherlee Clarkston and Queens Park Hebrew Congregation (Orthodox)

[Clarkston Road, Glasgow, G44 3YP](#)

+44 (0)141 637 8206

Rabbi Raphael Bokow +44 (0)141 637 0863

Shabbat and festival morning services begin at 9:45am.
For times of other services please contact the synagogue office.



Langside Synagogue (Orthodox)

[12 Niddrie Rd, Glasgow, G42 8QA](#)

+44 (0)141 649 2962



Langside Synagogue was built over 80 years ago and features a traditional wooden ark and other fittings hard-carved by one of its founder members. The designs are associated with Lithuanian synagogues of the period and are unique in Scotland. Shabbat and festival morning services begin at 9.30am. For times of other services please contact the synagogue office

Glasgow Reform Synagogue

[147 Ayr Rd, Newton Mearns, Glasgow, G77 6RE](#)

+44 (0)141 639 4083

www.grs.org.uk

Rabbi Nancy Morris

Glasgow Reform Synagogue was established 80 years ago and the building was completely refurbished in 2002. Services are held on Friday evening at 6:30pm, Shabbat morning at 11am and Sunday morning at 9.15am.



For information about kosher food in Glasgow see [p9](#)

For Glasgow mikveh see [p12](#)

[Contents](#)

EDINBURGH

Edinburgh is home to the second largest Jewish community in Scotland, a lively community with a wide range of social and cultural societies and clubs that include the Literary Society, Junior and Senior Maccabi Youth Clubs, Maccabi Cricket Club, Association of Jewish Refuges, WIZO, and community welfare.

Edinburgh Hebrew Congregation (Orthodox)

4 Salisbury Rd, Edinburgh, EH16 5AB

+44 (0)131 667 3144 / +44 (0)7734 291 836

secretary@ehcong.com

Rabbi David Rose: david.rose39@btinternet.com / +44 (0)131 668 1279

www.ehcong.com

The synagogue premises are also home to the community centre, the city's mikveh, a resource centre and the Cosgrove Library.

There are regular Friday night services, and the Shabbat and festival morning services begin (at "Nishmat") at 10.00am. There are also occasional weekday services – contact Rabbi Rose for details and to arrange Shabbat hospitality.



Sukkat Shalom: Edinburgh Liberal Jewish Community

+44 (0)131 777 8024

sukkatshalomsec@aol.com

www.eljc.org

Sukkat Shalom does not have its own premises, but holds services on the first Friday of each month at 7pm and at 11am on a Shabbat morning in the middle of the month. These are regularly followed by a communal meal. Rabbi Mark Solomon is "foster rabbi" to the community, and Yom Tov services are led by a student rabbi from Leo Baek College. Sukkat Shalom runs a cheder and a welfare group and holds regular social events.

For information about kosher food in Edinburgh see [p9](#)

For Edinburgh mikveh see [p12](#)

[Contents](#)

ABERDEEN

Aberdeen Hebrew Congregation

74 Dee Street, Aberdeen, AB11 6DS

+44 (0)1224 582 135

ereiter@csd.abdn.ac.uk

www.aberdeenhebrew.org.uk

Aberdeen has a small Orthodox Synagogue that in spite of having no permanent rabbi successfully conducts a variety of religious, educational, and social events. Friday night services are held every week at 6pm and a Shabbat morning service is held at 10am on the first Saturday morning of every month. Visitors are always welcome and advance notice of arrival is much appreciated as services can struggle to achieve a minyan.



For information about kosher food in Aberdeen see [p9](#)

[Contents](#)

DUNDEE

Dundee Hebrew Congregation

9 St Mary Place, Dundee, DD1 5RB

+44 (0)7906 219 206

dundeehc@googlemail.com

www.scojec.org/communities/dundee/index.html



Dundee is home to a small community that holds services on the last Friday evening of every month as well as occasional social events. The community is delighted to welcome visitors, but please contact the synagogue in advance.

For information about kosher food in Dundee see [p9](#)

[Contents](#)

Jewish Network of Argyll and the Highlands

There is no synagogue or formal Jewish community in other cities or in rural areas of Scotland, but people living in these areas have formed an informal network that meets for occasional social events.

Regional Liaison: Frank +44 (0)1445 712151
house.frank@gmail.com

For information about kosher food in the Highlands see p9

[Contents](#)

Students

There are significant numbers of Jewish students studying in Scottish universities and colleges, many of whom participate in religious, cultural and social events organised by the Jewish student chaplain and the various student Jewish Societies.

Northern Region Fieldworkers: Tanya and Gaby

+44 (0)7791 292 790
northern@chaplaincy.org

Union of Jewish Students

www.ujs.org.uk/

Edinburgh University J-Soc

jsoc.eusa.ed.ac.uk/
edinburghjsoc@yahoo.co.uk

St Andrew's University J-soc

www.st-andrews.ac.uk/~j-soc/
standrewsjsoc@hotmail.co.uk

Dundee University J-Soc

www.scojec.org/communities/dundee_j-soc/jsoc.html

For information about kosher food see p9

[Contents](#)

Kosher Food

The only kosher grocery shops and restaurants in Scotland are in Glasgow and Edinburgh, but a number of supermarkets have small kosher departments. In addition, some food on the general shelves of supermarkets and mini-markets throughout the country has a *hechsher* [label of rabbinic approval]. The most commonly found are:



Kosher bread and rolls approved by the Sephardi Kashrut Authority, and bearing their logo, can be found in most supermarkets throughout the country. Approved brands supervised include Kingsmill, Mr. Bagels, Allinson, Burgen, Sunblest (bread & crumpets only), Day O Fresh and Mighty White.

Additional information can be found on the websites of the London Beth Din www.kosher.org.uk and Sephardi Kashrut Authority www.sephardikashrut.org

Kosher food in Glasgow

Restaurant

- **L'Chaim's**
Advance booking is essential as the restaurant is not open every day.
[222 Fenwick Road, Glasgow, G46 6UE](#)
+44 (0)141 638 6116

Caterer

- **Simcha Catering**
+44 (0)141 620 0070

Grocery Shops

- **Hello Deli**
[200 Fenwick Rd, Giffnock, Glasgow, G46 6UE](#)
+44 (0)141 638 8267
- **Mark's Deli**
[52 Sinclair Drive, Glasgow, G42 9PY](#)
+44 (0)141 632 6091

Glasgow (continued)

Supermarkets with a kosher department

- **Tesco**
Silverburn Shopping Centre, Barrhead Road, Glasgow, G53 6QR
+44 (0)141 435 1400
- **Sainsbury's**
10 Darnley Mains Road, Glasgow, G53 7RH
+44 (0)141 638 6495
- **Asda**
1 The Avenue, Glasgow, G77 6EY
+44 (0)141 639 1333
- **Morrison's**
136-144 Fenwick Road, Glasgow, G46 6XN
+44 (0)141 638 0152

Kosher food in Edinburgh

Bakery

- **Falko Konditormeister**
7 Bruntsfield Place, Edinburgh, EH10 4HN
+44 (0)131 656 0763
Approved by Rabbi Rose (Edinburgh Hebrew Congregation)
Of the bread sold in the shop only the challah is kosher (pat Yisrael). All cakes made in the shop are kosher and dairy (chalav akum). Note that the shop also sells small pastries baked elsewhere which are not kosher. Challah is only available on Friday after 12.00pm.

Supermarket and deli with a kosher department

- **Sainsbury's**
Cameron Toll Shopping Centre, 6 Lady Road, Edinburgh, EH16 4TH
+44 (0)131 666 5200
- **Causewayside Deli**
80 Causewayside, Edinburgh, EH9 1PY

Kosher food in Aberdeen

Supermarket with a kosher department

- **Sainsbury's**
45-47 Garthdee Road, Aberdeen, AB10 7AY
+44 (0)1224 209821

Kosher food in Dundee

Supermarket with a kosher department

- **Tesco**
[Riverside Drive, Dundee, DD2 1UG](#)
+44 (0)845 6779229

Kosher food by mail order

Titanics, based in Manchester, delivers kosher food to most areas of mainland UK.

+44 (0)161 792 1888

info@titanics.co.uk

www.titanics.co.uk

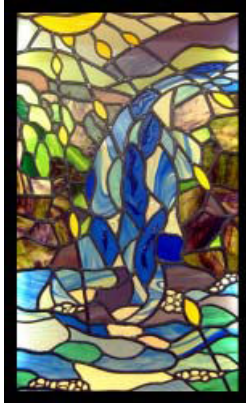
[Contents](#)

Bookshops

- **J & E Levingstone**
In addition to books, J & E Levingstone sells a range of religious items such as chanukiot and mezzuzot.
[47-55 Sinclair Drive, Glasgow, G42 9PT](#)
+44 (0)141 649 2962
- **Well of Wisdom**
This small bookshop is situated next to the Beth Hamedrash of Giffnock and Newlands Synagogue, and is open by appointment only.
[222 Fenwick Rd, Giffnock, Glasgow, G46 6UE](#)
+44 (0)7968 187 119
- **Lubavitch**
This small bookshop is situated within L'Chaim's Restaurant (see above), and is open by appointment only.
[222 Fenwick Rd, Giffnock, Glasgow, G46 6UE](#)
+44 (0)141 638 6116

[Contents](#)

Mikveh



Glasgow mikveh

contact Margalit Borowski +44 (0)781 104 110

Edinburgh mikveh

contact Val Simpson +44 (0)131 667 1521



Rabbi Rose +44 (0)131 668 1279

Stained glass window at Edinburgh mikveh

[Contents](#)

Education

Glasgow

-  **Calderwood Lodge Jewish Primary School**
Local Authority run Nursery and Primary School with a strong Jewish ethos that fosters a sense of pride and identity in pupils' heritage.
[28 Calderwood Road, Glasgow, G43 2RU](http://28.Calderwood.Road.Glasgow.G43.2RU)
www.ea.e-renfrew.sch.uk/calderwoodlodge/
0141 570 7060
-  **UJIA**
Provides resources and funding for the wide range of youth groups in Scotland, including B'nei Akiva, Habonim Dror, JLGB, FZY and RSY.
[Jewish Community Centre, 222 Fenwick Road, Glasgow, G46 6UE](http://Jewish.Community.Centre.222.Fenwick.Road.Glasgow.G46.6UE)
+44 (0)141 577 8220
- **Glasgow Kollel**
The kollel, established in 1977, holds daily shiurim for adults and children.
[Beth Hamedrash, 222 Fenwick Road, Glasgow, G46 6UE](http://Beth.Hamedrash.222.Fenwick.Road.Glasgow.G46.6UE)
www.glasgowkollel.co.uk/
+44 (0)7968 187 119
- **Lubavitch**
Lubavitch organises a wide range of activities including cheder classes, an explanatory Shabbat service: "Shul in the Park", and L'Chaim's Restaurant.
[The Glen, 222 Fenwick Road, Glasgow, G46 6UE](http://The.Glen.222.Fenwick.Road.Glasgow.G46.6UE)
www.lubofscot.co.uk/
+44 (0)141 638 6116

- **Maccabi**
Organises sports training and other activities for children and adults.
[May Terrace, Glasgow, G46 6LD](#)
+44 (0)141 621 1616



- **Limmud**
Occasional lectures, workshops and discussions on topics of Jewish interest.
[Jewish Community Centre, 222 Fenwick Road, Glasgow, G46 6UE](#)
+44 (0)141 577 6729

Edinburgh

- **Edinburgh Literary Society**
The "Lit", founded in 1888, holds regular lectures on a wide range of historical and cultural topics..
www.ejls.org/
ejls@xemaps.com
- **Cheder Classes**
 - Orthodox**
[4 Salisbury Rd, Edinburgh, EH16 5AB](#)
+44 (0)131 668 1279
 - Liberal**
info@eljic.org
+44 (0)7891 439 646
- **Adult Education Classes**
[4 Salisbury Rd, Edinburgh, EH16 5AB](#)
+44 (0)131 668 1279
- **Maccabi**
Youth group that meets weekly in members' houses for discussion, and programmes of Jewish interest.
mail4griffin@aol.com

Aberdeen and Dundee

- Rabbi Rose (Edinburgh Synagogue) visits monthly for shiurim and discussion groups.

[Contents](#)

Welfare Organisations

Jewish Care

[The Walton Community Care Centre, May Terrace, Giffnock, G46 6LD](#)

+44 (0)141 620 1800

www.jcarescot.org.uk

First recorded in Synagogue minutes in 1858 as the Glasgow Hebrew Philanthropic Society, the successor organisation today, Jewish Care Scotland, provides an extensive range of care services for Jewish people in need in Scotland. Professional staff are supported by over 100 volunteers who assist in almost all services. Services include Social Work support, specialist help for people with mental health problems, Welfare Rights advice, Day Care, Meals on Wheels, Befriending and Clubs for older people and those with long term physical illnesses and disabilities. Within the boundaries of East Renfrewshire Council staff and volunteers work in a unique partnership with East Renfrewshire Council for the provision of social work services to the Jewish Community.



Cosgrove Care

[The Walton Community Care Centre, May Terrace, Giffnock, G46 6LD](#)

+44 (0)141 620 2500

www.cosgrove.co.uk



Established in 1963, Cosgrove Care supports people with learning disabilities and their families within the Jewish community. It offers a comprehensive range of support, including supported independent living for adults, holiday playschemes for children, and daily and weekly group activities. It also runs two charity shops, one of which offers supported employment and volunteering opportunities to service users.

Newark Care

[32 Burnfield Road, Glasgow, G46 7PY](#)

+44 (0)141 621 2560

Provides residential and hospital care within a Jewish environment for people who are no longer able to continue living in their own home.

[Contents](#)

History and Genealogy

Scottish Jewish Archives Centre

129 Hill Street, Glasgow, G3 6UB

www.sjac.org.uk/

+44 (0)141 332 4911

Founded in 1987 and based in Garnethill Synagogue in Glasgow, the Scottish Jewish Archives Centre aims to document and illustrate the religious, organisational, social, economic, political, cultural and family life of Jews in Scotland since the eighteenth century. It provides a research facility and an educational resource for the Jewish, and also the wider community, in order to heighten awareness of the Jewish heritage in Scotland and to stimulate study of the history of the Jews in this country.

The Necropolis

Castle Street, Glasgow, G4

www.glasgow.gov.uk/en/Residents/Parks_Outdoors/HeritageTrails/GlasgowNecropolis/

The first burial in Glasgow Necropolis in 1832 was of a Jewish man, Joseph Levi. The Necropolis has been described as “a unique representation of Victorian Glasgow”. It is a memorial to the merchant patriarchs of the City and contains the remains of almost every eminent Glaswegian of its day, with monuments designed by leading Glaswegian architects including Alexander ‘Greek’ Thompson, Bryce, Hamilton and Mackintosh. The Jewish section is in the northernmost corner (to the far left on entering the main gates).

Jewish Cemeteries in Scotland

Records of burials in Jewish cemeteries in Scotland are held by the Scottish Jewish Archive Centre and the local Jewish Burial Societies.

Glasgow Hebrew Burial Society +44 (0)141 577 8226

Queen’s Park Charitable Trust +44 (0)141 577 8241

Edinburgh Burial Society +44 (0)773 429 1836 / secretary@ehcong.com

For a complete list of Jewish cemeteries in Scotland see the Jewish Genealogical Society of Great Britain website at www.jgsgb.org.uk/bury03.shtml

St Mungo Museum Of Religious Life And Art

2 Castle Street, Glasgow, G4 0RH

www.glasgowmuseums.com/venue/index.cfm?venueid=13

+44 (0)141 553 2557

St Mungo Museum explores the importance of religion in people's lives across the world and across time, with the aim of promoting understanding and respect between people of different faiths and none.

[Contents](#)